

Machine type: EBO/EBO High-Speed Baking oven

This type of machine can treat offset plates pre-coated on one side only. The machine is available for the following operating widths: 650/850/1050/1250/1450/1550 and 1700 mm. The baking with the baking oven extends the duration of the printing plates on the printing machine. A thermal treatment on both sides achieved with air circulation results in evenly baked plates featuring a smooth surface. The temperature is freely adjustable from 0 °C to 300 °C. Energy consumption is minimised by means of a thermoregulation system and a proper insulation. The oven is composed of the following parts:

- a) Inlet table with conveyer belt featuring customised lengths.
- b) Heating area.
- c) Outlet table with conveyer belt featuring customised lengths, starting from 500 mm
- d) External control unit with command panel (in this way, the commands can be placed both on left or right side, as required).
- e) Following to the heating time, consumption is reduced of approximately a 60%.

This type of machine and the module extensions comply with the instruments safety rules (CE-label).

TECHNICAL DATA

Operating widths: 650/850/1050/1250/1450/1550 and 1700 mm

1. Length

Standard: 2000/2000/2000/2000/2200/2200 and 2200 mm

High-Speed: 2200/2200/2200/2200/2400/2400 and 2400 mm

2. Width:

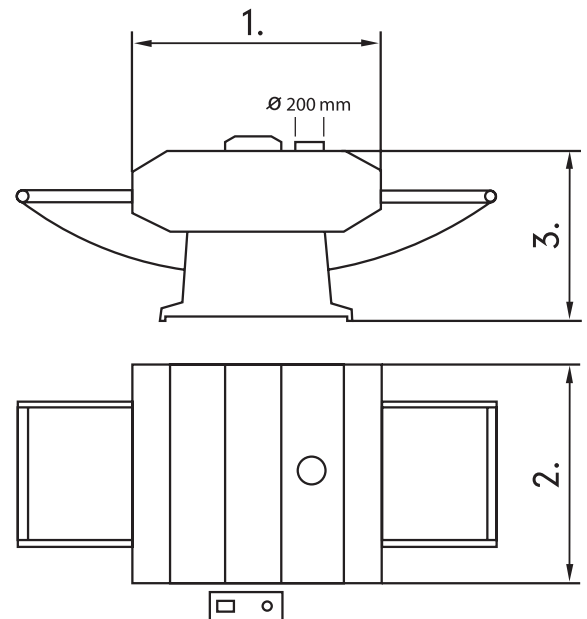
1300/1500/1700/1900/2100/2200 and 2300 mm

3. Height:

1300 mm

Ventilation should be 350 cubic meters per hour.

Power requirements: 24 kW/400V 3P-N-GN



MODULE EXTENSIONS

- Pre-settable operating time (optional)